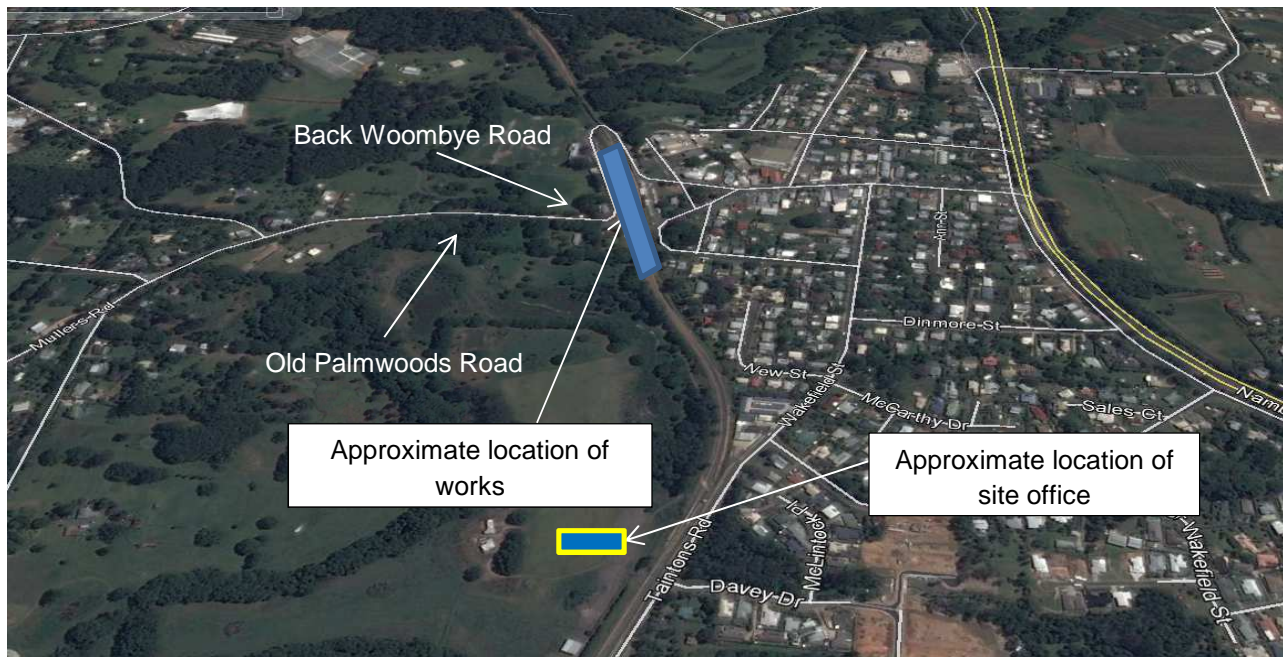


## SEQ Rail Stabling Program - Woombye construction update

As part of the SEQ Rail Stabling Program, Queensland Rail and CPB Contractors (formerly known as Leighton Contractors) will be undertaking vital construction activities along the rail corridor during the scheduled track closure of the North Coast line on 2 and 3 April 2016.



**This work will be undertaken on Saturday 2 April and Sunday 3 April 2016 from 6.30am to 6.00pm, weather permitting.**

Works will include:

- Concrete works for the foundations of overhead line equipment masts and signals
- Installing electrical conduits underneath the railway line
- Delivery trucks and workers' vehicles entering the site via the corner of Old Palmwoods Road and Back Woombye Road
- Use of machinery such as excavators, mobile cranes, front-end loaders, generators, track mountable excavators, directional drilling machine, resurfacing machines and a concrete pump
- Use of small power tools such as drills, saws and minor vibratory equipment
- Delivery and unloading of materials.

Every effort will be made to keep disruption to a minimum. We appreciate your patience during the construction period and will continue to update you as work progresses.

# For your information



## SEQ Rail Stabling Program - Woombye construction update

### Where can I find out more information?

If you have any questions or would like to register for more information, please contact the Project Team on **1800 783 334** (free call) or **stabling@qr.com.au**. Visit **[www.queenslandrail.com.au/stabling](http://www.queenslandrail.com.au/stabling)** anytime for more information and updates.

### Project information

The South East Queensland (SEQ) Stabling Program involves the design and construction of new or additional train stabling facilities in four locations: Robina, Banyo, Elimbah and Woombye.

The \$116 million project was announced in May 2015. The SEQ Stabling Program is part of the broader New Generation Rollingstock project that will see 75 new suburban six-car trains added to the South East Queensland City network, a 30 per cent increase of the current fleet.

CPB Contractors will design and construct the new stabling facilities to help house 75 new six-car trains which will commence services in the second half of 2016.